

Calendar of Events:

LAST CHANCE to see through Aug. 30
Simply Agrarian: Selections from the
Great Plains Art Museum

Extension by POPULAR DEMAND
through Aug. 23
Floyd F. Nichols: Knife Maker, Metal
Sculptor, Cowboy

Beverly Evans Garcia
From Barnyard to Pasture
Emerging Artist Gallery
August 30– October 15, 2009
Reception: August 30, 4-6pm

Mid America Impressions:
Jane Scott Retrospective
September 9– November 29, 2009
Reception: September 13, 2:30-4:30pm
Curators discussion, 1:30pm

Coffee with the Curators
Conserving Nichols Paintings
October 21, 10:30am, RSVP by Oct. 16

Museum Hours:
Wed– Sat 10am-4pm, Sunday 1pm-4pm
Appointments and tours available
Free Admission, Open to the Public

575 E Street, David City, Nebraska 68632
402.367.4488, www.bonecreek.org



Dale Nichols, *When Day is Done*, 1951, Gold Seal Puzzle, Private Collection Loan.

Curator's Note:

Welcome to the premier edition of *Bone Creek Agrarian Art Newsletter*, a quarterly publication that replaces previous postcard mailings. This is a great advance toward the museum mission: *To Be the National Center for Preserving, Viewing and Learning about Exceptional Agrarian Art*.



Until now Bone Creek couldn't report on attaining this mission. You weren't fully informed about exhibitions by nationally recognized artists V... Vaughan of Texas, Marilyn Bower of Washington, Michael Duane of Kansas, and Nebraska's own Dale Nichols. A newsletter would've told you about exhibitions loaned to the museum, including "Voices of American Farm Women" and "Simply Agrarian, Selections from Great Plains Art Museum". A quarterly publication could've informed you on the growing Bone Creek collection of art by historically recognized American artists such as Homer, Benton, Curry, and Nichols; as well as by major contemporary agrarian artists such as Robert Bateman and Gary Ernest Smith. You'll now know about continuing physical development, such as the art vault recently constructed to museum standards in order to apply for accreditation by American Association of Museums. Learn about improved professionalism, such as hiring Assistant Curator, Amanda Mobley. Now you'll know about such milestones in a timely manner. The 'News' section provides updates on art, as well as education, finance, and public relations. 'Dale Nichols Corner' reports museum progress on the first ever scholarly book on Nichols. The Calendar includes a new 'Coffee with the Curators' event, where you'll learn about collecting and preserving your art, as well as appreciating exceptional artwork selected by Bone Creek curators.

Note a listing of board members. If you share the vision of developing a national center for agrarian art, you can volunteer to work on Finance, Public Relations, or Education committees. This can lead to a very fulfilling position on the board. Sponsors are needed for each exhibition and publication. Join a congenial group of volunteer hosts of the museum. Donate great art to build a world renowned art collection, the core of the museum. To support and develop a great non-profit museum, please contact a board member.

This first newsletter reports on agrarian artists **Floyd Nichols, Dale Nichols, Gary Ernest Smith, Gail Sundell, Jane Scott, and Beverly Evans Garcia**, as well as on poetry by **Ted Kooser, Twyla Hansen, and Leo Kovar**. Bone Creek Museum of Agrarian Art is a national attraction for visitors from both the USA and foreign countries. Now visitors and supporters from both near and far can stay informed!

Mark L. Moseman
Curator

Board of Directors:

- Anna Nolan Covault
- Mark L. Moseman
- Allen Covault
- Laura Moravec
- Brian M. Zimmer
- Michael L. Moravec
- Carol Moseman
- Ruth Nichols
- Samantha Kosch

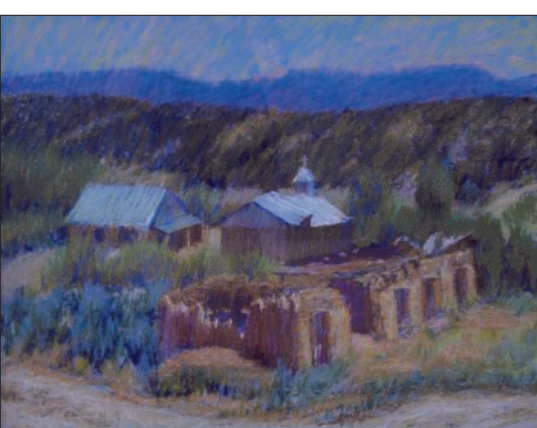
Our Mission is to be the National Center for preserving,
viewing, and learning about exceptional agrarian art.

Agrarian— pertaining to lands, fields, or their tenure

As a non-profit museum, achieving the mission is possible due to generous donors listed at www.bonecreek.org. Thank You from the Board.

Non-Profit ORG
Postage
PAID
David City NE
Permit No. 3

575 E Street
David City, NE 68632
Telephone 402.367.4488
www.bonecreek.org
ADDRESS SERVICE REQUESTED



Mid America Impressions Jane Scott Retrospective



NEWS

Floyd F. Nichols gets great reviews and extension by popular demand!

View the extended Floyd Nichols exhibition through August 23. Brian Crockett from the Mid-America Arts Alliance, Manager of the Hands-on Experimental Learning Program (HELP) recently said, "I am hoping many more audiences will have a chance to see the exemplary work of Floyd Nichols. Although there were many capable craftspeople of earlier eras, very, very few demonstrate such a rare mix of skill and artistry. Of course I've come to expect a keen curatorial eye in the quality exhibitions presented by Bone Creek." We are proud to present this one-of-a-kind exhibit.

Ted Kooser Draws Big Crowd

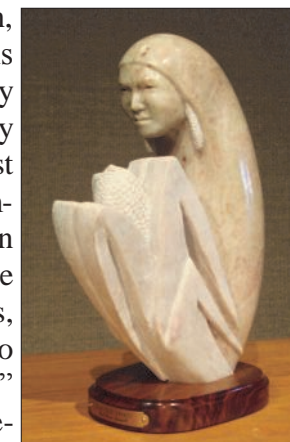
The August 9 event, Agrarianism Expressed in Art and Poetry with a panel of fabulous poets Ted Kooser, Twyla Hansen, and Leo Kovar, may be setting the stage for an annual event.

School is back in session and school group tours continue to provide a valuable educational opportunity for schools in Butler County and adjoining counties, as well as for community groups like Girl Scouts. Last semester over 500 students toured the galleries with grade appropriate curriculum and exciting lessons. Refer to our website for more educational information.

COLLECTION

The collection was recently improved by long term loans of artworks from a private collector. "Woodchopper" by Gary Ernest Smith, (Photo at left with Curator, Moseman) brings a haunting sense of lost agrarian culture to the collection gallery. According to Curator

Mark Moseman, "The museum is proud to display this painting by Smith, the most famous contemporary agrarian artist in the United States, next to "Windtalkers" by Robert Bate-



DALE NICHOLS CORNER



Assistant Curator, Amanda Mobley recently returned from a trip to Texas to interview Dale Nichols' daughter, Joan Lenhart. Such interviews are part of the research necessary to prepare for the planned book and exhibition entitled Dale Nichols: Transcending Regionalism, scheduled for 2011. This book will be the first scholarly publication solely about David City's hometown artist. On the trip Mobley learned about the close friendship between Nichols and Architect Frank Lloyd Wright. They became friends when both were living in Arizona. In the 1940's, Nichols and Wright were involved in the beautification and restoration project for the City of Tucson. Together they shared with one another their ideas about color, design, and the current art scene. Nichols knew many well known artists and business professionals that add to his very interesting life story.

A Passion for Beauty By Amanda Mobley

Jane Scott, born in 1918, recently celebrated her 91st birthday. She is showing no signs of slowing down. Scott regularly paints in her own home and in plein air. Only recently has she started working again in oils after many successful years of painting with pastels. She has the signature title, Master Pastelist in the Pastel Society of America. She is a multifaceted artist who beautifully handles various media and subject matter. She most notably seeks beauty. Her passion for beauty has kept her painting long after many artists are no longer able.

Scott began painting as a young woman, but with a family to care for and children to raise, it was not until her children were in school that she was able to devote significant time and energy to painting. "As a woman, there were a lot of sacrifices that I had to make, but now I am free." However, Jane views both her raising of a family and her artwork as a labor of love. She married young and feels that the greatest thing a woman can do is to be a wife and mother. Great things do not come without sacrifice. Scott aims to invest one hundred percent of herself in what she does. For years she has enjoyed the freedom of time to paint. She feels fortunate to have stayed healthy so that she is able to travel; to wander down a trail and happen upon a lovely landscape just asking for Jane Scott's interpretation on canvas.

Scott has always painted en plein air, or in open air, never using the references of photographs and has successfully depicted various subjects; landscape, figurative, and still life.

"I have no interest in painting from a picture. There is no change of light, no life." Augustus Dunbier, well-known Nebraska painter, has been the key influence on the artwork of Jane Scott. She took many workshops and classes from him in Omaha. Scott met Dunbier while she was in her teens and they carried out a rich friendship of almost 60 years until his passing in 1977. Scott was his prized student, his protégé. His workshops would often be on site, and Jane learned a great deal from him about color, light, mood, and the love of painting, by observing him.

Scott's teacher, Augustus Dunbier, stressed the importance of capturing the mood of the atmosphere. When painting outdoors, Scott feels the liveliness of nature and infuses that into her painting. The beauty of her surroundings inspires her to paint. Through her

art, she is able to fully enjoy the beauty around her. "I like beautiful things, I always have," Jane said recently, but that has been the motto of her life. "Mid America Impressions" features some of Scott's most recent paintings in oil and pastel. This exhibit strives to portray the wide breadth of Scott's skill and subject matter. You don't want to miss this truly seasoned fine artist.

Top left: *Village Church*, Pastel, 22x28"

Top right: *Mule Farm*, Oil, 20x24"

Below: Jane Scott and Assistant Curator, Amanda Mobley

Lower right: *Autumn Pond*, Pastel, 11x14"



Emerging Artist Galley in the Legion Building

The museum sponsors exhibits by local and emerging artists in the Legion Building at 551 E Street. Amy Tomasevicz, art teacher at Aquinas High School, "My Journey" opened in March, alongside Norris Chee, Artist in Residence, sponsored by Butler County Arts Council. A feature exhibition of work by Floyd F. Nichols ends on August 23rd.

"Beverly Evans Garcia: From Barnyard to Pasture" is the current exhibit, with an opening reception August 30, 2009 from 4-6pm. Beverly Evans from Schuyler, Nebraska moved to Illinois. There she became an artist after raising four boys with her husband. Learning from several renowned artists, she strives for loose brushwork expressing the character of each subject.

Beverly Evans Garcia From Barnyard to Pasture

August 30—October 15, 2009
Reception Aug. 30, 4-6pm



Polled Hereford, Oil on Canvas, 16x20"