

BONE CREEK

MUSEUM OF AGRARIAN ART

575 E Street | David City, NE 68632

ADDRESS SERVICE REQUESTED

Non-Profit ORG
Postage
PAID
David City
Permit No. 3



bonecreek.org

PEOPLE TO THE LAND THROUGH ART

CONNECTING



BONE CREEK
MUSEUM OF AGRARIAN ART

Agriarian Art
NEWSLETTER

MAY
2017
VOLUME, ISSUE II

150 FOR NEBRASKA'S 150TH

150 Artists, 150 Artworks, 150 Years of Nebraska in Miniature

Communities across the state continue to add special events to celebrate the 150th anniversary of Nebraska's statehood. Last year, I presented an idea to the board of directors for our own special celebration of statehood. It was a very ambitious idea—represent 150 artists whose accepted artwork will be available for purchase. Thankfully, in their typical fashion, the board members and volunteers of Bone Creek accepted the challenge enthusiastically.

If you are a regular reader of this newsletter, you have seen a “call to artists” advertised for this show for the last year. We have been working to recruit artists, accept submissions, and organize countless details. Collections Manager Gabrielle Comte took on all the correspondence, loan forms and organizing submissions by the applicants. On a Sunday

afternoon in February, Gabrielle and I reviewed all of the artworks that were to be considered. Wow, I was so impressed. I am so grateful to each of the artists who responded to our call. They responded with thoughtfulness to our agrarian focus—sending us stunning images of the landscape and more. They responded with determination to do their best and sent it off for critique. They showed their talents in a wide variety of media and subject matter. I am so thankful to all of the artists for making this big idea a reality.

Now the fun part begins. We invite you to visit, vote for your favorite, tell your friends, and consider purchasing a piece. The exhibition opens May 3, 2017. All of the artworks are for sale, with a very wide range of prices. Proceeds are shared between the artist and the museum. The artwork is also available for viewing and

purchase online at www.bonecreek.org beginning May 3rd. We aim to have prompt record keeping, so when a piece is purchased online, it will be marked sold in the gallery and vice versa. Please visit regularly as you are sure to see a detail or perspective anew with each visit.

In art school, one of the common critiques that students hear is that the piece could be better if it was bigger or if there was more of it. I don't think we can pack too much more into our small exhibition space than 150 small works of art. I hope you enjoy this exhibition as a celebration of the many gifts and talents of artists in honor of Nebraska.

—Amanda Mobley Guenther, Curator

IMAGES

Sampling of works curated for the 150 Artists, 150 Artworks, 150 Years of Nebraska in Miniature exhibition.

CALENDAR OF EVENTS

03 150 for Nebraska's 150th
MAY May 3 - July 30, 2017

27 Memorial Day Weekend
MAY Reception
Saturday, May 27, 2017, 1-4pm

29 Closing reception and end of sale
JUL Saturday, July 29, 2017

03 Art and Poetry of the Barada Hills
AUG Aug. 3- Oct. 22, 2017

05 Survey of the Permanent
AUG Collection
Aug. 5 - Oct. 29, 2017

TBD CornFest 2017
SEP September, TBD

BONE CREEK MUSEUM OF AGRARIAN ART

Museum Hours

Wed, Fri, Sat 10am-4pm
Thursday 10am-8pm
Sunday 1pm-4pm

Appointments and tours available

FREE admission

402.367.4488
www.bonecreek.org

575 E Street | David City, NE 68632

Changing Faces of Bone Creek

Bone Creek Museum has recently added three new board members and organized five working subcommittees which includes community members who are experts in their respective areas, but are not necessarily board members. The museum has also contracted with Julie Katz of Main Street Consulting to assist with its marketing plan and execution. Hopefully, with her work you will be better informed about projects and events happening at the museum.

Board of Directors:

| | |
|------------------------------|---|
| Ron Clarke, President | Anna Nolan (Covault), Treasurer |
| Allen Covault | Carey Potter, Secretary |
| Jim Hanna (pictured middle) | Cheri Schrader |
| Johnathan Hladik | Ruth Thoendel |
| Kathleen Lohr (pictured top) | Jeanne K. Hain Wiemer (pictured bottom) |



EVENTS

Memorial Day Weekend Reception

Each year we host a reception on Memorial Day weekend to welcome David City alumni. All are welcome for art viewing and refreshments. **Bonus:** a few artists, some of whom are unable to attend the closing reception, will be present at this afternoon's event.

Pre-sale for 150 for Nebraska's 150th

A pre-sale for the Nebraska 150th exhibition will be offered April 29-30th for Bone Creek Museum members. Members at any membership level are invited to preview the exhibition during the weekend's normal open hours, Sat. 10am-4pm and Sun. 1-4pm. The museum is closed Monday and Tuesday. Members, for whom we have digital contact information, will also receive a private website link to preview the exhibition and purchase online. If you are not already a member, we encourage you to join and participate in this special member-only perk. Paintings will be for sale to the general public beginning May 3rd.

150 Closing Reception and End of Sale

Mark your calendars on July 29th for the closing reception of 150 for Nebraska's 150th. This will be your last opportunity to purchase any unsold artworks. This will also be a wonderful chance to meet some of the artists and visit with them directly. The People's Choice winners will be announced and a good time is sure to be had by all.

CORNFEST 2017

Did you attend CornFest, Bone Creek's first fundraising dinner, last year? Did you miss it but heard we had a wonderful time? We have heard from you that this is a type of event you'd like to see repeated. The Public Relations and Events Subcommittee is busy planning another fabulous fall dinner event in September. You'll hear from us when tickets go on sale.

Comments from the right

March 26, 2017 - Reception for Amanda Breitbach: Land/People and live music by the Toasted Ponies bluegrass band

“Every time I come to Bone Creek I have rich, meaningful experiences.”
-Tom Bartek, Omaha, NE

“This was my first visit to Bone Creek and what a wonderful experience! The exhibition, Land/People was very powerful and to hear from Amanda herself about the thought process behind each photo added depth and meaning in a very personal way. The reception was enjoyed by so many - great food, great bluegrass music and so many new friends. I am looking forward to my next visit!”
-Danielle Dailey, Reynolds, NE



A Closer Look at 150 for Nebraska's 150th

Each one of the artworks in this exhibition tells a story. There is room here to highlight a couple.

“Many artworks submitted for this exhibition are unique and intriguing, but I am particularly impressed with some of the photographic images we received. *Through the Window* by Angela Carroll instantly caught my attention. The image of the large red barn has consistently symbolized the ideal farm, but in Carroll's photograph, the reflection of the icon is framed in the worn window of an old farm structure, which pays tribute to the generations of laborers who forged the farming tradition.”



Angela Carroll, *Through the Window*, photograph

-Gabrielle Comte, Collections and Gallery Manager

“Dwight Kirsch (1889-1981) is the only deceased artist represented in 150 for Nebraska's 150th. I was glad to be able to accept the request that a print by Kirsch be included in the show and sale. Kirsch had a strong influence on the arts in Nebraska as an artist, teacher, and administrator who purchased many modern artworks that formed the basis of the Sheldon Museum of Art's collection. This is a surrealist depiction of a road, farm and mailbox. Rural free delivery began in the US in 1896 serving farm families with an increased ease of communication.”



Dwight Kirsch, *RFD Nebraska*, woodcut print

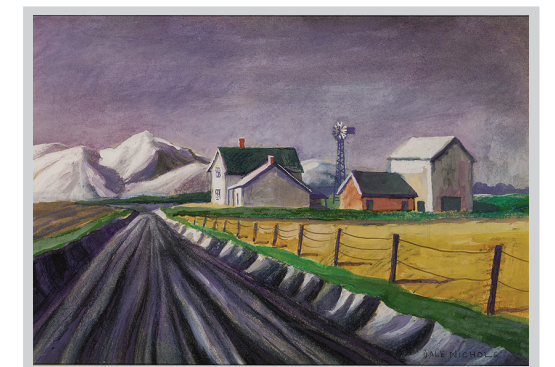
-Amanda Mobley Guenther, Curator

COLLECTION

The Bone Creek Collection continues to grow through generous donations of gifted works of art. Museum staff have been in conversation with several donors who are gifting artworks this summer. The exhibition schedule for the remainder of the year should have room to exhibit some brand new pieces. Dale Nichols will also remain a focus of exhibition as we show off the permanent collections.

DALE NICHOLS CORNER

Bone Creek Museum continues to be a major resource for information about Dale Nichols, and particularly to galleries and auction houses that are currently marketing his work. This lovely watercolor *Rural Farmhouse* was recently up for auction at Sotheby's, who consulted with Bone Creek about the piece. The museum's curator has also been working with an auction house in Sacramento, Calif. for a Nichols oil going up for sale in July. She will be giving a presentation there in May.



Dale Nichols, *Rural Farmhouse*, n.d., watercolor and gouache on paper



SHOP

\$16.00 each

Bone Creek Hat

Purchase details online at bonecreek.org