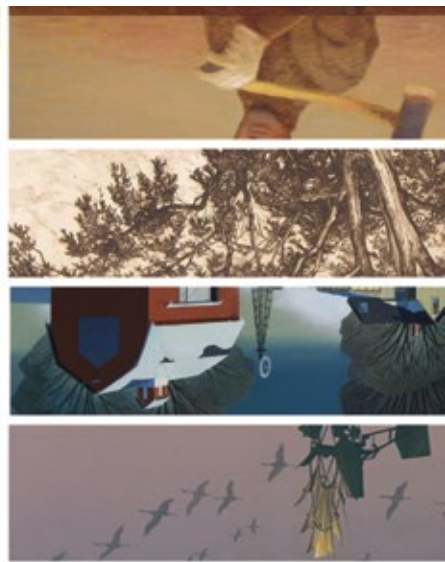




bonecreek.org



FEB
2019
 VOLUME, ISSUE I

BONE CREEK
 MUSEUM OF AGRARIAN ART

Agriarian Art
 NEWSLETTER

POTTERY

EXHIBITION *and* SALE

Three alumni from the University of Nebraska-Lincoln Master of Fine Arts in Ceramics headline this group show of sculptural forms and utilitarian vessels meant to exemplify the museum's mission; to connect people to the land through art.

In the summer of 2017 Bone Creek experimented with a special fundraising style exhibition. You may recall that the museum displayed 150 artworks by 150 artists for Nebraska's 150th statehood anniversary. It was a tremendous success. It ideally would become a model for how Bone Creek can continue to engage local artists and raise funds for the museum's sustainability. With that in mind, an exhibition and sale of pottery will open February 27, 2019.

This format of calling for local artists is a new venture for Bone Creek. As I write this, the submission process is open to all Nebraska artists who would like to submit one to two pieces of pottery or sculpture. The selection process this time is simply to fill our exhibition space with the first 15 qualifying artists to join the UNL alumni. We anticipate that many will respond and find a beneficial connection with Bone Creek. Ultimately, presenting a different artform will show the versatility of the museum and added value to the community. By encouraging community participation, we build partners and advocates. Thank you in advance to all of those who participate, both artists and collectors. *(If you are an artist, it may not be too late to apply. If you are a patron, learn more about the final sale reception on page 2.)*

Emily Reason, now of North Carolina, received her MFA from UNL in Ceramics, one of the top ten ceramics programs in the nation. Though not strictly an agrarian artist, she was inspired by her time in Nebraska to make some wonderful representations of corn cribs and barns. Those built environments connect to her broader interest in the practice and creation of objects for their aesthetic beauty. She wrote, "Human reverence for craft is embedded in our existence. Ingrained within craft is a strong sense of nostalgia which connects us to history, conjures memories and is a powerful vehicle for communicating ideas, emotions and stories." Reason's work is highly detailed, making the ordinary into a special treasure.

Normandy Alden received her MFA from UNL in 2014 before returning to upstate New York to start a joint venture as potter and small-scale rancher at Cairncrest Farm. Alden is eager to draw connections between her pottery and the daily tasks of the farm, of which the most obvious is with food; feeding and caring for ourselves and our communities. "Every summer I preserve garlic scapes, green beans, cucumbers, and more using jars just like the one I am sending Bone Creek. Fermenting food is an ancient practice dating back thousands of years, and I appreciate how homegrown food and handmade pots complement each other."

con't on page 2

IMAGES

- 1. Normandy Alden: Nesting bowls
- 2. Normandy Alden
- 3. Emily Reason
- 4. Normandy Alden: Fermentation Jar
- 5. Autumn Cipala

Images courtesy of the artists.



CALENDAR -of- EVENTS

- 24**
FEB **Steven Ramsey: In Glass**
On view through Feb. 24, 2019
- 27**
FEB **Pottery Exhibition and Sale**
Feb. 27, 2019- April 28, 2019
- 28**
APR **Pottery Reception**
April 28, 2-4pm
- 31**
MAR **Ten Year Anniversary Retrospective**
On view through March 31, 2019
- 31**
MAR **Music by The Lightning Bugs**
March 31, 4:00pm



Museum Hours

Wed, Fri, Sat 10am-4pm
Thursday 10am-8pm
Sunday 1pm-4pm

Appointments and tours available

FREE admission

402.367.4488
www.bonecreek.org

BONE CREEK
MUSEUM OF AGRARIAN ART

575 E St., David City, NE 68632

con't from page 1

From mid-coast Maine comes the porcelain delicacies of Autumn Cipala, a 2009 UNL MFA graduate and featured on Martha Stewart's blog in 2010. Her style, careful touch and lightly colored work is immediately recognizable. "I am interested in light for its ability to capture ones attention as it illuminates: fleeting sunlight on a tide-pool, or light beaming through a window to fill a porcelain bowl, creating an illusion of suspension. Inspired by nature, the luminosity of translucent porcelain, and openwork, I consider light as an active element as I compose form and pattern."

As I look forward to seeing the work by these three artists and the submissions

of our local Nebraska potters I am inspired once again by the formal ideals set out in this exhibition. Normandy put it better than perhaps I could when she wrote, "that to support a small farmer, or to buy and use handmade objects, one must subscribe to ideals of self-sufficiency, human creativity and ingenuity, valuing the handmade, the local, and valuing human connections and community. Ultimately, this is a way to value the land which sustains us." I hope you will come see the work at the museum or online to support these artists and the museum.

-Amanda Mobley Guenther, curator

NEWS & EVENTS

POTTERY EXHIBITION and SALE RECEPTION

Roll up your sleeves and make a pot! Join us at the museum from 2-4pm on April 28, for a reception closing the 2019 Pottery Show and Sale. Local potters will be demonstrating the use of a pottery wheel during your last opportunity to view this unique exhibit. All the pieces will be for sale during the exhibition, which runs from February 27 to April 28. This closing reception will be your last chance to purchase one of these works of art.



BOARD of DIRECTORS

The Board of Directors and staff met for a strategic planning meeting at the Benedictine Mission House in Schuyler on Feb 2nd. The day was spent reviewing Bone Creek Museum's 2018 activities and looking forward the future of the museum regarding fiscal sustainability, exhibitions, education and community engagement. After presentations by Michael Moravec of Moravec Financial Advisors and curator Amanda Mobley Guenther, the board is energized to better serve Butler County and all of Nebraska.

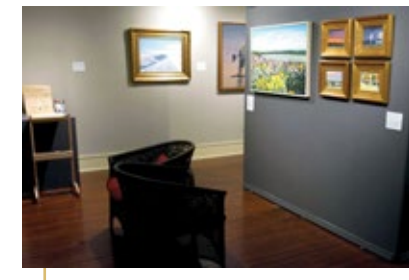
MEMBERSHIP

Thanks to the 100+ families and businesses that have supported the museum with ongoing membership. Your partnership makes what we do possible. It's not too late to join our 2019 membership. Do you love all kinds of museums and plan to travel this year? The \$100 giving level provides you free admission when you visit more than 650 museums through the NARM membership program. See a map of all partnering museums at narmassociation.org.

NEWS FROM THE FIELD

10TH ANNIVERSARY

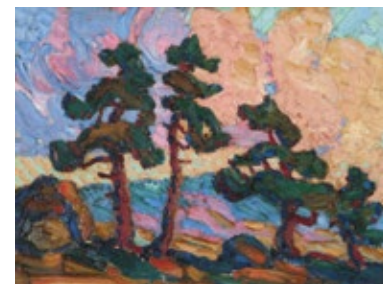
RETROSPECTIVE EXHIBITION
— and more —



DOWNTOWN CONSTRUCTION

Road construction around the downtown David City square has halted for the winter. It will resume when the weather cooperates again and will replace the sidewalks in front of the museum. There is parking behind the museum through an alley which has access points on three sides of the block. We suggest if you are coming from out of town, please call the museum, 402-367-4488, to get the most up to date report on where to park.

SUMMER BLOCKBUSTER



Birger Sandzen: Land of Color — MAY 3-JULY 28, 2019 —

See the broad brush strokes of Swedish impressionist Birger Sandzen (1871- 1954) with a selection of original paintings on loan from the Birger Sandzen Memorial Gallery in Lindsborg, Kansas.



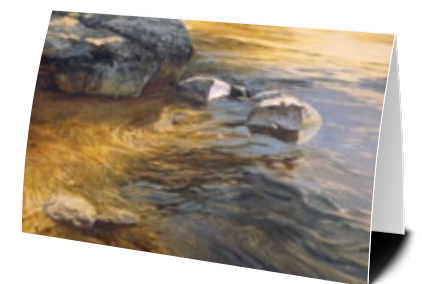
DALE NICHOLS CORNER



COWBOY ENTERING INDIAN TERRITORY WATERCOLOR; BY DALE NICHOLS

With much gratitude the museum received an original illustration by Dale Nichols, gifted by James W. Hewitt. This image is one of several that Nichols did to illustrate the book *Blood Brother*, by Elliott Arnold, published in 1966.

SHOP GREETING CARD BY MARYLYN BOWER



Order online or contact the museum to purchase 4X6" card.
bonecreek.org

COST ONLY
\$2.15 EA.