

BONE CREEK
 MUSEUM OF AGRARIAN ART
 575 E Street | David City, NE 68632
 ADDRESS SERVICE REQUESTED

Non-Profit ORG
 Postage
 PAID
 David City
 Permit No. 3

XIV
 VOLUME, ISSUE IV

NOVEMBER 2021

Yes, This is Nebraska

Debra Joy Groesser

For the past several years plein air painter, Debra Joy Groesser, has been creating a series of Nebraska landscapes that emphasize the beautiful vistas and breathtaking waterways that make the state's topography more than the stereotypical "fly-over" country.

Debra garnered national recognition early in her career for her seascapes, many of which were created on location during her multiple trips to the California coast. When asked where in California she lived, Debra surprised people when she told them "Nebraska". The conversation usually then turned to "well no wonder you paint seascapes...Nebraska is the most boring state we've ever had to endure driving through." Those conversations made Debra determined to show people that her home state is anything but "boring", so she embarked on a journey of painting the diverse and beautiful Nebraska landscape. Her hope is that when viewers see the paintings, they will exclaim, "That's Nebraska?" Of course, her reply will be, "Yes, This is Nebraska."

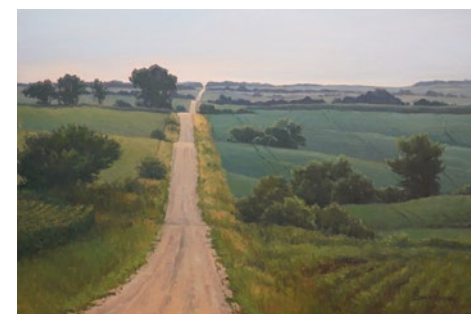
Debra wrote, "It pains me when I hear people say Nebraska is 'flat and boring.' It's my hope that this exhibition will show Nebraska in a way that will surprise people and encourage them to explore the beauty and diversity of our Nebraska landscape for themselves."

This ongoing project has sent the artist and her husband on road trips across the state.

Debra "traveled around Scottsbluff, north to Harrison, then across Highway 20 and took a number of small dirt roads from there. The places and scenery we [she and her husband] discovered were so breathtaking we were both squealing like kids at Christmas...it was pure joy." The exhibition also includes images from near Fort Robinson and Chadron State Parks, the Ogallala grasslands, Chimney Rock at sunset and a sand road that went over one of the buttes near there. Some of the paintings in this collection have already sold through her Omaha area gallery. Others are still ideas in her mind inspired by the hundreds of photo references she has taken.

Groesser has a lengthy resume of activity as an impressionist landscape artist. She received a BFA degree in art in 1978 from Bellevue College (Bellevue, NE). Debra is a Signature member and President/CEO of the American Impressionist Society, a Master Signature member of Plein Air Artists Colorado, a Signature member of Laguna Plein Air Painters Association and American Plains Artists. She is also represented by numerous galleries including her own in Ralston, NE.

(Cover) D. Groesser, *Magic Hour at Chimney Rock*, oil, 24x36"



D. Groesser, *The Long Road Home*, oil, 24x36"



D. Groesser, *Whispers on the Prairie Wind*, oil, 24x30"

BONE CREEK
 MUSEUM OF AGRARIAN ART

Join the nation's only exclusively agrarian art museum and Dale Nichols research center to support our mission of connecting people to the land through art!

BECOME A MEMBER TODAY

CONNECTING
 PEOPLE TO THE LAND THROUGH ART



A Small Gem
 with a Big Mission

Agriarian Art
 NEWSLETTER

XIV
 VOLUME, ISSUE IV
 NOV 2021

CALENDAR -of- EVENTS

- 13** NOV **Capital Campaign Kickoff**
Saturday, Nov. 13, 2021,
11am-1pm
- 14** NOV **Landscape and Community:
Local Quilts**
Thru Nov. 14, 2021
- 15** NOV **Closed for installation**
Nov. 15-18, 2021
- 19** NOV **Debra Joy Groesser:
Yes, This is Nebraska**
Nov. 19, 2021 - Mar. 13, 2022
- 05** DEC **Christmas on the Bricks
David City Town Square**
Sunday, Dec. 5, 2021
- 07** DEC **Volunteer Christmas Party**
Tuesday, Dec. 7, 2021, 2-4pm

CURRENT Museum Hours

Wednesday-Saturday:
10AM-4PM

Thursday:
10AM-6PM

Sunday:
1PM-4PM

Monday, Tuesday, Major Holidays:
Closed

Appointments and tours available

FREE admission

402.367.4488
www.bonecreek.org

BONE CREEK
MUSEUM OF AGRARIAN ART

575 E St, David City, NE 68632

NEWS & EVENTS

MORE LOCAL QUILTS

Visitors have been enjoying the rich history and nostalgia represented in the “Landscape and Community: Local Quilts” exhibition this autumn. One common response we hear from our guests is, “I wish I had known about this exhibit sooner. I have a beautiful quilt I inherited!” While our selection of quilts on display is small due to the limitations of our gallery space, we decided to utilize our Facebook page to continue our celebration of quilting tradition online.

Submissions thus far have included a traditional double wedding ring pattern, an embroidered block quilt, a quilt made from old ties, and more, ranging from the Great Depression era to today. The enthusiastic response to our call for quilts for both online and physical display further reveals the cultural significance of quilting for multiple generations of farm women.

If you would like to submit a quilt for online display, email a photo and a description of the piece to our collections manager at artinfo@bonecreek.org by November 8, 2021.

TED KOOSER QUILT PRINT

Signed prints by Poet Laureate, author and visual artist, Ted Kooser, are available for purchase at the museum. The print, entitled “Quilt Show Today”, was created from Kooser’s original 1976 painting dedicated to his mother, who made a quilt for him that year. The composition, framed by a variety of popular quilt blocks, depicts a town square with businesses and homes proudly displaying quilts for the village quilt show.

The prints are available for sale in the museum shop for \$32.25 including tax.



COUNT OUR BLESSINGS

Bone Creek Museum will be hosting our Capital Campaign kickoff event, Saturday, Nov. 13 at the Ford Building in David City, NE. Everyone is invited to attend as we “Count Our Blessings”. The event will run from 11 am to 1pm and will highlight the site of the new location of the Bone Creek Museum.

We will “Count Our Blessings” as we celebrate the harvest, our volunteers and our initial fundraising success, all promoting art and agrarianism.

The story of Bone Creek Art Museum, the history of the Ford Building, the Campaign video, refreshments and a few “surprises” will be featured in the building at 312 5th Street, David City; where visitors will get a glimpse of the historic property and envision the future of the museum.

While in David City, everyone is encouraged to visit the quilt exhibition on display at the current location of Bone Creek Museum of Agrarian Art, 575 E Street.

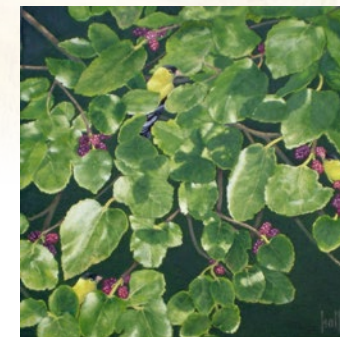
Join the Bone Creek Board of Directors and volunteers as we begin this journey of RESTORING, CONNECTING and GROWING.

NEWS

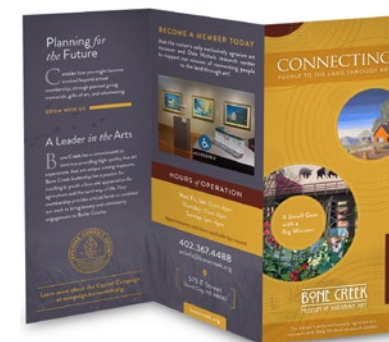
FROM THE FIELD

LOOKING AHEAD

The 2022 exhibition schedule will include a one-woman show with Ashland, NE artist Wendy Hall, who has created a collection of paintings inspired by a family diary. We will also welcome some fresh perspectives from agrarian artists who are under 40 years of age.



Wendy Hall, *Goldfinches and Mulberries*, oil, 12x12”



Annual membership is a critical way to keep the museum lights on and great artwork displayed at the museum.

In the last issue the museum board president shared a message about an upcoming capital campaign to renovate a historic building in downtown David City and provide much needed space to our growing museum. Learn more at www.campaign.bonecreek.org.



FARM ISLAND ANTHOLOGY

Below is the second of seven poems by Penny Niemi that will be the inspiration for a group exhibition in 2023, in collaboration with the Tubac Art Center. Application details in a Call for Submissions will be released in January 2022.

Farm Islanders

Farm Islanders are mountain men, ranching men, pioneers with cowboy souls, whose spirits long for wilderness and solitude.

Stubbornly rooted in the loam and open spaces, they are “forever residents” cemented in the countless yesterdays of forefathers who cut the trees and turned the virgin soil.

For these self-reliant men, the ground is their horse, to be saddled, ridden, worked.

Believing in its promise to provide, they have nurtured the land and the land has nurtured them, in a synergistic dance.

Moored here by choice, they live their lives tenaciously protecting fragile shores, and how to stay is their abiding mission.



DALE NICHOLS CORNER

“Dale Nichols: Always a Regionalist”, an exhibition from Bone Creek will travel to Lindsborg, Kansas for display at the Birger Sandzen Memorial Gallery, Nov. 7, 2021 - Jan. 2, 2022. The Regionalist American Art movement is typically defined as art of rural scenes made in the 1930s and 40s, however, the term can also refer more broadly to landscapes of a particular geography of the 20th century. The collection highlights Nichols’ tendency toward regionalism whether he lived in Nebraska, Alaska or Guatemala. While Nichols continued to paint farm scenes throughout his life, he also painted local landscapes using his principles of order and light.

IN MEMORIAM

Ron Vaca (1948-2021)
Bone Creek Museum Volunteer
2017-2021

SHOP \$8+ tax + S&H



NICHOLS ORNAMENT