

BONE CREEK
MUSEUM OF AGRARIAN ART
 575 E Street | David City, NE 68632
 ADDRESS SERVICE REQUESTED

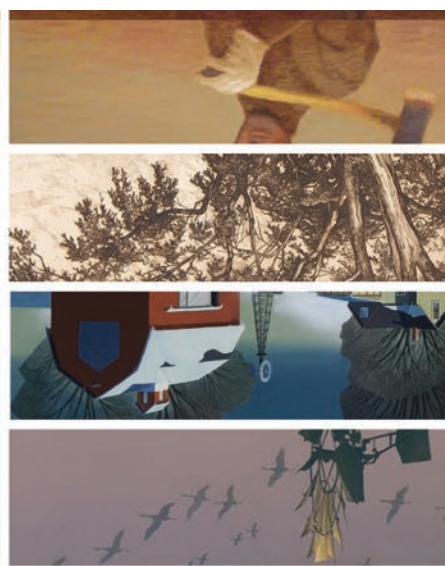
Non-Profit ORG
 Postage
 PAID
 David City
 Permit No. 3



AUGUST 2022

SUMMER of EDUCATION

bonecreek.org



AUGUST
2022
 VOLUME, ISSUE III

BONE CREEK
 MUSEUM OF AGRARIAN ART

Agriarian Art
 NEWSLETTER

While the warm summer months represent holidays and vacations for most, at Bone Creek Museum, staff utilize those months to head “out to the field” to provide educational and entertainment opportunities for our local community.

Since 2014, the museum has sponsored a free art workshop for members of Butler County 4-H, each relating to a theme or exhibit being showcased that season at Bone Creek. This year, collections manager Gabrielle Comte focused on the themes of family heritage and legacy, which were prominent in the exhibition “Wendy Hall: Paintings and Pages”. Hall’s collection of oil paintings was inspired by the journal entries of her husband’s great-grandmother, which detailed the joys and hardships of daily life on a family homestead. Comte’s idea for the 4-H project came from one piece in particular, “Plans for a Cake”, a still life detailing ingredients for a child’s birthday dessert. For the workshop, 4-H students were instructed to bring a family favorite recipe, and using watercolor paints and calligraphy pens, they illustrated the ingredients and amounts. The final products were a visual interpretation of a traditional

recipe which could be framed and treasured for generations. Examples from this workshop were displayed at the Butler County Fair in July.

On the final day of the fair, Bone Creek participated in the annual county parade in David City for the first time in years. Gabrielle Comte and the museum’s newest recruit, Sarah Juraneck, distributed candy while showing off one of our most recent acquisitions, the 1923 Model-T Ford originally sold in the building which will soon house Bone Creek Museum. The car will be incorporated into a display in the front entrance as an homage to the deeply rooted history of the building.

The finale of our summer adventures was the continuation of our partnership with Butler County Arts Council for the summer art day camp the last week in July. Gabrielle drew inspiration for her session from multiple printed works on display in the museum’s permanent collection gallery. For the session, students used ordinary items like embroidery hoops, sheer curtain panels, glue and expired gift cards to create primitive screen prints on canvas bags.



Bone Creek at the Parade

“I was so impressed at the students’ ability to understand the process,” Comte said. “It’s difficult to resolve which areas to leave open for the ink and which need to have glue to resist it, but they figured it out with wonderful results.”

CALENDAR -of- EVENTS

15
JUL

**Who's Next?:
Agrarian Artists under 40**
July 15 - Nov 6, 2022

continued from page 1

"I was so impressed at the students' ability to understand the process," Comte said. "It's difficult to resolve which areas to leave open for the ink and which need to have glue to resist it, but they figured it out with wonderful results."

We are grateful to have the support of prominent local organizations and non-profits through these important partnerships. As our organization continues to grow, we hope to offer even more educational opportunities throughout the year which "connect people to the land through art."



Gabi's paint demonstration for 4-H

NEWS & EVENTS

NEW INTERN

Bone Creek Museum is very excited to have Sarah Juranek join the museum staff as an intern. She graduated with an art degree in the spring of this year from the University of Nebraska-Kearney and has returned to her hometown of David City. She is setting up a part-time artist studio outside of town. Sarah will begin by helping Gabrielle Comte with collections management and social media. Additionally, Sarah's senior thesis exhibition celebrating her family's Czech culture is on display through September in 569 E Street gallery next door to the museum. This well received show is sponsored in full by Butler County Arts Council.



Sarah Juranek

FARM ISLAND ANTHOLOGY

The fifth of seven poems by Penny Niemi is published below. The poetry is inspiration for a juried group exhibition next year, in collaboration with the Tubac Art Center. All of the poems and application details are posted under Upcoming Exhibitions at bonecreek.org.

ISLAND WOMAN

She is mistress and co-captain of this island and this kitchen space is her space. An animated, vibrant space defined by authenticity. Free from discontent of dreams undone, this space has birthed her joy. Here childcare, cooking, cleaning, canning personify her creativity. No sameness marks her days.

NEWS FROM THE FIELD

WHO'S NEXT?: AGRARIAN ARTISTS UNDER 40

In July a new exhibition opened featuring four artists under the age of 40. However, it is not their age that marks their work. Each is noted for the impact that their natural surroundings have had on the formation of their lives and intentions as artists.



Naomi Friend of Iowa has focused on the roots of her Dutch heritage. She works to collage painted images with cyanotype photography. Robert Jinkins of Wisconsin calls himself "an artist of rural life" as he explores the passage of time and family transformation on his multi-generational farm. Andrew Lincoln photographs the vineyards and laborers he has grown up with in Napa Valley, California, capturing the work of immigrants rarely seen and understood by patrons sampling wines. Chad Olsen left the allure of the New York art scene to return to his home state of Nebraska. He creates abstracted landscapes using Dura-Lar, a polyester film that creates a surface for chance to play a role in the artist's process.



Dale Nichols, *Untitled (Winter Farm)*, 1948, oil, Private Collection, courtesy of the Lincoln Art Company.

DALE NICHOLS CORNER

Some of Dale Nichols' paintings retain their original frames. Many of these frames are the same style. It is inferred that he made them himself (or perhaps had them made all by the same builder). With as frugal as we know Nichols was at times, I suspect he made them. They have always been on larger pieces (30x40) or slightly smaller. Recently, I recognized some frames that fit the unique construction style but are fitted for much smaller paintings. It's fun to make a new discovery and a reminder when looking at older artwork to not be too quick to reframe it. The frame may have its own beautiful story.

CURRENT Museum Hours

Wednesday-Saturday:
10AM-4PM

Thursday:
10AM-6PM

Sunday:
1PM-4PM

Monday, Tuesday, Major Holidays:
Closed

Appointments and tours available

FREE admission

402.367.4488
www.bonecreek.org

BONE CREEK
MUSEUM OF AGRARIAN ART

575 E St, David City, NE 68632

SHOP

APPAREL



T-SHIRTS
\$15.00
+ tax

HATS
\$16.00
+ tax



Purchase online or in-person
bonecreek.org