

# BONE CREEK

MUSEUM OF AGRARIAN ART

575 E Street | David City, NE 68632

ADDRESS SERVICE REQUESTED

Non-Profit ORG  
Postage  
PAID  
David City  
Permit No. 3

# XV

VOLUME, ISSUE II

Bone Creek Museum has a tremendous focus toward agrarian art. This passion leads us to discover and advocate for artists that have a special message or unique perspective about land and its tenure.

Assembled here is artwork by four young(ish) artists who have agrarian work as their specific focus. Each has well-formed ideas about the themes of their interest. Each has built a resume of recognition and success.

Coincidentally, in this show, each artist has selected pieces that hit close to home, literally. Naomi Friend of Iowa has focused on the roots of her Dutch heritage. Robert Jinkins continually returns to his multi-generational family farm in Wisconsin for inspiration. Andrew Lincoln photographs the vineyards and laborers he has grown up with in Napa Valley, CA. Chad Olsen left the allure of the New York art scene to return to his home state of Nebraska to create abstract landscapes.

# WHO'S NEXT?:

AGRARIAN ARTISTS UNDER 40

## NAOMI FRIEND

A descendant of Dutch immigrants and raised in a cultural and ethnic Dutch enclave of Iowa, Naomi Friend is a professional artist who has had solo exhibitions in Iowa, California, and Nebraska. She is currently working on multiple bodies of work all rooted in a mixed media and photographic process. In recent years, she has focused on animal migration, historic breeds of animals, and still life in the Dutch tradition.

"As a student, I was encouraged (as all students are) to explore non-traditional methods and media. I discovered the media Cyanotype, an antique photo printing process. Adopted by field biologist Anna Atkins in 1840, it was one of her go-to methods for taking samples in the field. It is the perfect melding of the technological and home-grown, finding balance, just as I hope to in my own life," said Friend.



Naomi Friend, "Dutch Belted Cow," 12x12", Cyanotype and acrylic on cotton

Friend grew up in the community of Sioux Center, Iowa, and earned her undergraduate degree from Dordt College where she studied fine art and graphic design. She earned a Masters of Fine Art in Integrated Visual Arts at Iowa State University in 2013. Naomi worked for three years at the Octagon Center for the Arts as the Exhibits Director. Friend has received awards in national juried art exhibits. She exhibits in a variety of outdoor public art events including the Des Moines Arts Festival. Naomi operates a small 3 acre farm, Friends Flowers, where she grows flowers for local markets.

## ROBERT JINKINS

Robert Jinkins is an award-winning representational painter and portraitist. His work focuses upon the locus of the family's 1848 farm. Homesteaded by his forebears before Wisconsin became a state, Jinkins frequently returns to the farm to record the visages of familiar sites as they evolve with the ravages of time.



Robert Jinkins, "Tridentine Mass," 30x80", Mixed Media

The works are built up using layers of thin loose washes, glazes, scumbles, and obsessive hatching in acrylic mixed media. The accumulation of these layered strata of paint weave together detailed portraits and landscapes. Jinkins' use of multiple layers enables his work to vibrate with an existential intensity. From beneath this surface of accumulated marks, underdrawings remain barely evident like skeletal structures over which the rest of the painting is stretched.

The exhibition of Jinkins's creative work has resulted in awards in both national and international juried shows. Highlights include taking the top prize at the Bradley International Biennial Printmaking and Drawing Exhibition, The Octagon All Media competition, as well as the Seven State Biennial (Juror Bert Seabourn). Jinkins was included in the March 2022 issue of Fine Art Connoisseur Magazine as one of their "Five to Watch". Jinkins holds his BA in Fine Art from the University of Wisconsin Platteville and an MFA from Iowa State University.

## ANDREW LINCOLN

Andrew Lincoln is a lifelong resident of Napa Valley, California, a region responsible for 4% of California's wine production. Lincoln's father is a vineyard manager. When he is not moonlighting as a photographer, Andrew Lincoln works as a wine educator for a winery in the Los Carneros region of Napa Valley. For many, Napa has become synonymous with grandeur and luxury, and this reputation often detracts from the simple fact that wine is an agricultural product. It is grown and harvested from the earth, often with painstaking care. Like many California wine regions, Napa has immensely

continued

bonecreek.org



BONE CREEK  
MUSEUM OF AGRARIAN ART

AGRARIAN ART  
NEWSLETTER

MAY  
2022  
VOLUME, ISSUE II

MAY 2022



# CALENDAR -of- EVENTS

- 18**  
MAR  
**Wendy Hall:  
Paintings and Pages**  
Mar. 18-July 10, 2022
- 10**  
JUL  
**Closing Reception &  
The Toasted Ponies Concert**  
July 10, 2022, 2-4pm
- 11**  
JUL  
**Closed for Installation**  
July 11-14, 2022
- 15**  
JUL  
**Who's Next?:  
Agrarian Artists under 40**  
July 15- Nov. 6, 2022
- 27**  
JUL  
**Summer Art Day Camps**  
July 27-29, 2022

## CURRENT Museum Hours

- Wednesday-Saturday:  
10AM-4PM
- Thursday:  
10AM-6PM
- Sunday:  
1PM-4PM
- Monday, Tuesday, Major Holidays:  
Closed

Appointments and tours available

FREE admission

402.367.4488  
www.bonecreek.org

# BONE CREEK

MUSEUM OF AGRARIAN ART

575 E St, David City, NE 68632

## NEWS & EVENTS

continued from page 1

benefited by the willingness of people from Mexico and Central America to work in the fields. They provide the backbone of the wine industry, where their efforts keep it viable and they are able to help sustain their families back home. Through his photography, Lincoln draws attention to these laborers and reminds viewers of the industry's roots.

"Every time I photograph harvest, I am awestruck by the work ethic and openness of these vineyard professionals. I am always concerned with potentially invading someone's privacy, but more often than not, I get a "pose" for the camera, a friendly wave, a cheeky grin," says Andrew Lincoln.

Lincoln has received numerous awards including three Grand Prizes from the California Farm Bureau Federation Photo Contest.

### CHAD OLSEN

Chad Michael Olsen is an artist of abstract landscapes that explore textures and color palettes as a way to communicate emotions. When painting, he often finds himself working to capture the atmospheres of nature and the emotions from being in these places. For him, being in nature is a solitary experience—one he can only truly share with others through his paintings. Most recently, Olsen has expanded his use of transparency film materials to include acetate and Dura-Lar. These new materials have allowed Olsen to experiment with scale and composition.

He studied painting at the University of Nebraska-Lincoln under Aaron Holz and Keith Jacobshagen, followed by several years of living and working in New York City. In 2017, he returned to Lincoln, Nebraska, where he maintains a studio.

### JOIN THE CAPITAL CAMPAIGN

As of now, **over \$2 million** for the Bone Creek Museum Campaign has been secured. Preparations for phase one of the restoration project (including the infrastructure, exterior and main floor) have begun.

Completed in 1914, the two-story Ford Building in downtown was once a Ford Motor Company branch store, where Model T automobiles were assembled and sold. The plans for the entry of the new museum will include a renovation that restores the space to its original style as seen in this dealership photo. [Learn more at: campaign.bonecreek.org](http://campaign.bonecreek.org)

### SUMMER FUN IN THE COMMUNITY

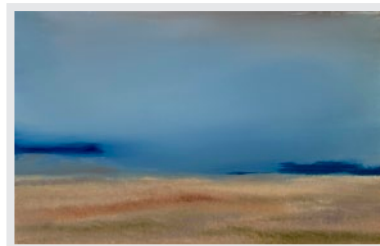
As the season of warm weather and leisure approaches, Bone Creek staff and volunteers are preparing to head into the field to lead community events and continue meaningful partnerships with local organizations. Inspired by the artist's use of familial ephemera in the "Wendy Hall: Paintings and Pages" exhibition, museum staff will host an heirloom themed art workshop for local 4H students in June, the results of which will be displayed at the Butler County Fair in July.

Also, for the first time in many years, Bone Creek Museum will be represented in the county parade the Sunday of fair weekend. The last week of July, museum collections manager, Gabrielle Comte, will teach a two-hour printmaking class for Butler County Arts Council's annual Summer Art Day Camp, which includes three days of art sessions open to youth and adults. We love these opportunities to spread enthusiasm for the arts with people of all ages!

For updates on community events and classes, follow Bone Creek Museum on Facebook or visit our website at [bonecreek.org/education](http://bonecreek.org/education).



Andrew Lincoln, "Armando Reyes," 16x20", Photograph



Chad M. Olsen, "Wildfire smoke sky study II," 2020, 5x8", Oil on Dura-Lar



# NEWS

FROM THE FIELD

## WENDY HALL: PAINTINGS AND PAGES

Twenty paintings are hung chronologically in the North 40 Gallery by Ashland, Nebraska artist, Wendy Hall. The paintings are inspired by homesteaded on her family farm. The artist focused on themes experienced by many homesteaders. In her landscapes and still lifes we see the beauty of hard work and the rewards of determination.



### FARM ISLAND ANTHOLOGY

The fourth of seven poems by Penny Niemi is published below. The poetry is inspiration for a juried group exhibition next year, in collaboration with the Tubac Art Center. Application details will be posted at [bonecreek.org](http://bonecreek.org) this month. The official application through CAFÉ opens in April.

### BARN

It rises from the heart of island earth in a born-again coat of red, its starched Dutch cap of shimmering roof clasping in a tight embrace this island's pulsing center:  
nerve center,  
muscle center,  
heart center,  
life center.

Sturdy timbers, stone, cement define this vital space,  
and  
high above a yawning hayloft mouth perfumed in clover sweetness, the weather vane prognosticator charts the course through calm and storm.

Alee,  
strong, double masted silo spires hold it at ground and anchor,  
while out behind,  
a weathered shed, all swayed and broken like an old mare's back, lists helplessly, door dangling by cobweb threads.

Pre-dawn till long past dusk, lights blaze from window squares,  
and  
furry balls of jumbled polka dots and stripes tumble from their lairs, to mew and bounce and chase with leaping legs between the farmer's boots as milk is drawn:  
whoosh, psssss, whoosh, psssss.  
No sick days, snow days, holidays, vacation days;  
when cows are ready, farmer must be too.

Barns never sleep,  
not while action churns and pumps and ebbs and flows like swirling ocean tides through this island's red cloaked  
nerve center,  
muscle center,  
heart center,  
life center.



### DALE NICHOLS CORNER

The museum was recently gifted a painting created by Dale Nichols' artistic rival, Terence Duren. The painting "An Autumn Day in the Country" now hangs in the South 80 Gallery. Duren was the subject of a retrospective in 2018, where guest curator Cole Sartore compared the two artists on a major scale.



Terence Duren, "An Autumn Day in the Country", oil on canvas, 20" x 24", Gift of Kate Mead.

## SHOP



Worthy Rivals: Dale Nichols  
and Terence Duren Book  
[bonecreek.org](http://bonecreek.org)