

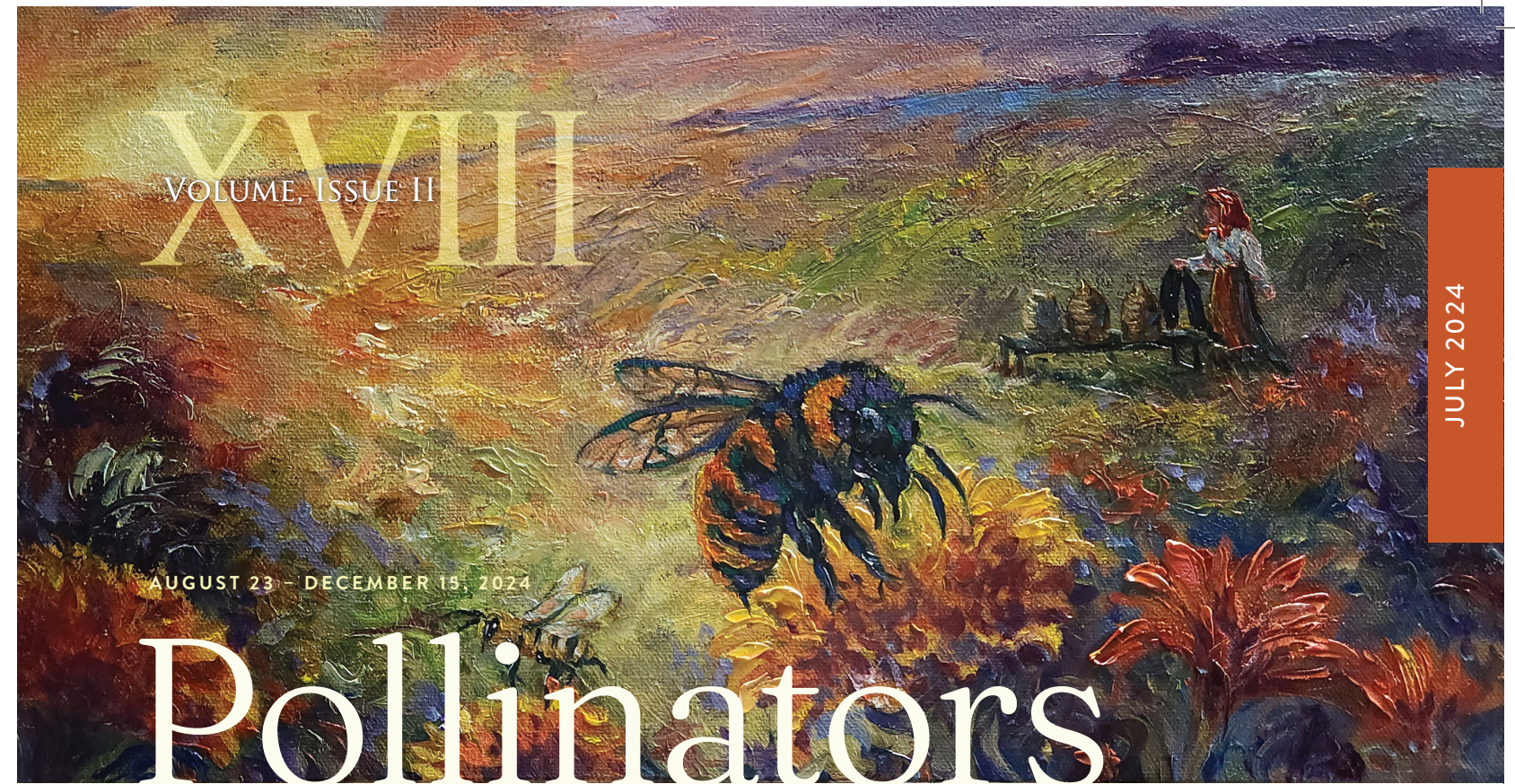
BONE CREEK

MUSEUM OF AGRARIAN ART

575 E Street | David City, NE 68632

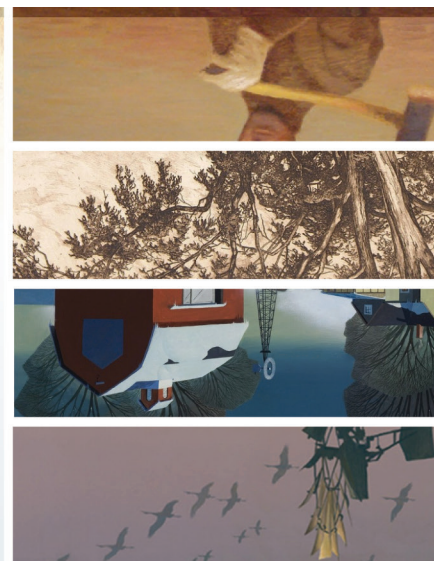
ADDRESS SERVICE REQUESTED

Non-Profit ORG
Postage
PAID
David City
Permit No. 3



EIN 20-8479913

boncreek.org



BONE CREEK
MUSEUM OF AGRARIAN ART

Agriarian Art
NEWSLETTER

XVIII
2024
JUL
VOLUME, ISSUE II

Impact Nebraska Artists, a professional exhibiting artist group since 1985, has a brand new exhibition about the little helpers that make our gardens grow.

Pollinators are the secret heroes of our gardens, orchards, fields, and farms. Birds, bats, butterflies, moths, beetles, flies, wasps, small mammals, and most importantly, bees are the key to keeping our plant world diverse and healthy. Pollinator populations across the United States are declining, so it is urgent that we control insecticides and protect pollinator habitat in order to preserve our lands, our wildlife, and the crops that feed the planet. What would our world look like without pollinators?

Currently, 26 artists fulfill the organization's mission to educate through outreach programs and exhibitions. From inception, Impact has been recognized for professionalism and a high level of creative expression. Please join us for an opening reception on Saturday, Aug. 24, from 1-3pm to see the latest works and meet some of the artists.

Marcia Bauerle, "Everything Connects", mixed media

DaVinci's quote from more than 500 years ago is my inspiration for this painting. Sacred Geometry forms the mandala centered on an image of Earth from space, with plants, animals, and insects describing the intricate connectedness of everything in our world. Human health and nutrition are dependent on health of the creatures we share this planet with. Science is dependent on art. Art is dependent on science. Everything Connects.



Ben Darling, "Bee and Rose", linoleum cut print

"The humble bumble bee, a common pollinator here in Nebraska and North America and our wild rose. This pairing represents late spring and early summer at their finest. The image is from a set of prints I'm making depicting pollinators and plants from the Great Plains."



Deb Monfelt, "Go Tell the Bees", oil (cover)

At one time bee-keeping was of primary importance to many cultures for varied reasons including honey production and pollination. In Western Europe, perhaps shared or passed down through Celtic traditions, it was of great importance for the beekeeper to inform the hives of any historical or familial changes, including births, weddings, deaths, etc. This continues at some sites even today. When Queen Elizabeth II passed away in 2022, the royal beekeeper informed the bees of her death. It was considered bad luck for the future, if the bees were not kept informed about changes in their environment.

All images courtesy of Nebraska Impact.



CALENDAR -of- EVENTS

- 29** JUL Summer Art Camps
July 29-31, 2024
- 18** AUG We Always Had Chickens:
Lorraine Ortner-Blake
Thru Aug. 18, 2024
- 19** AUG Closed for Installation
Aug. 19-22, 2024
- 24** AUG Pollinators: Nebraska Impact
Aug. 23-Dec. 15, 2024
Reception-Aug. 24, 1-3pm
- 08** SEP Melody Wrangler Trio-
Classic Country and Western
Swing concert with Pam and
Randy Barger, Jim Pipher and
special guest fiddler Terry Keefe
Sept. 8, 2024 at 3:30 pm

CURRENT MUSEUM HOURS

- Wednesday-Saturday:
10AM-4PM
- Thursday:
10AM-6PM
- Sunday:
1PM-4PM
- Monday, Tuesday, Major Holidays:
Closed

Appointments and tours available

FREE admission

402.367.4488
www.bonecreek.org

BONE CREEK MUSEUM OF AGRARIAN ART

575 E St, David City, NE 68632

NEWS & EVENTS

FORD BUILDING AND CAMPAIGN

New window installation began in May making it possible to move ahead with more sheetrock work since the building is more weather tight. The daylight from the windows has done wonders to transform the space, making it easier to plan for the visitor experience. Electrical, HVAC, and fire protection systems work continues.

EDUCATION

The summer education season is underway, and the Bone Creek staff has ventured out "into the field" sharing their knowledge and skills with the community.



FOOD FOR THOUGHT

Did you know that eye contact and an unconventional hand position in Edouard Manet's "Olympia" scandalized the elite of Paris in 1863? Or that modern artist Yves Klein was so devoted to his mission to paint the "infinite" that he commissioned his own formula of blue paint? These were a couple of topics presented by collections manager, Gabrielle, in her May presentation titled "I Don't Get It" at the Hruska Memorial Public Library's monthly Food For Thought program. She and the attendees examined four famous works of art that are commonly misunderstood, underappreciated, or were poorly received upon their debut. They then studied the historical context which influenced both the creation and reception of those works to understand why art historians consider them important.

Thanks to Thrivent Financial Solutions, Jacque Masek and the Library volunteers for providing and serving the meal!

4-H FUN

In June, staff members Gabrielle and Sarah continued our decade-long partnership with Butler County 4-H, leading a painting workshop inspired by the style and rural themes of the museum's current exhibit, "We Always Had Chickens" by Lorraine Ortner-Blake. After practicing different painting techniques, participants painted two small paintings which answered the questions "What is your favorite way to participate in 4-H?" and "What else do you enjoy about the county fair?". These paintings will be mounted together on a canvas to create a collage celebrating the joyful memories of rural fair time.



View the collage at the Butler County Fair July 9-14!

TRIBUTE BRICKS

Engraved tribute bricks are still available for purchase supporting the renovation of the Ford Building. Each brick will be engraved with two lines of text of your choosing. Bricks this year are priced at \$200 each. Forms for the bricks are also available in the museum.

ORDER bonecreek.org/join/giving/

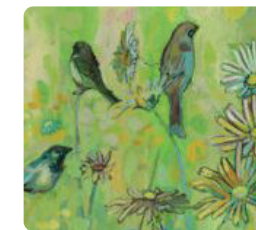
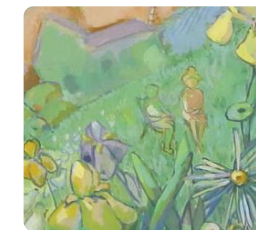


We Always Had Chickens:

Lorraine Ortner-Blake

MARCH 22, 2024 - AUGUST 18, 2024

One of the special things about Ortner-Blake's collection is the detail of her collages. She has tucked in many small details that give depth and authenticity to her scenes. Her choice of paint, gouache, lends itself beautifully to her style, as the paint dries opaque, soft, and matte. She can practically hide figures in the pattern of the ground, such as the people in "Picking Mulberries." Gouache has the softness of watercolor without the translucency. Lorraine expertly layers pattern and form without the colors running together and becoming muddy. With gouache you can work light to dark and dark to light. In this detail of "Pulling Rope" there are several careful layers in this one inch square of the canvas.



IMAGES

(top) Lorraine Ortner-Blake, *Picking Mulberries* (detail)
(bottom) Lorraine Ortner-Blake, *Pulling Rope* (detail)

ART DAY CAMP

There is still time to sign up for Butler County Arts Council's Summer Art Day Camps held July 29-31! Bone Creek's Gabrielle and Sarah will lead one of the six sessions demonstrating how block prints can be made using small Lego tiles. Other sessions, led by teachers Addie Zook and Charity Schafer, include creating suncatchers, Japanese Notans, clay magnets, watercolor resist paintings, and hanging macramé pots. Sessions are open to ages 8 years and older—adults are welcome! Cost is \$20 per day or \$10 per class.

Registration forms are available at Bone Creek Museum and Hruska Memorial Public Library and online at

<https://bonecreek.org/events/>

and

<https://butlercountyarts.com/event/art-day-camp-2024/>



DALE NICHOLS CORNER

As a repository for Dale Nichols archives, we have numerous artifacts that are not suitable for display but are enlightening to the study of Nichols's processes. Dale Nichols's grandson, Dale Smith, gave to the museum the "stencils" by which Nichols made the rubbings of the Guatemalan Mayan ruins. Nichols made original rubbings from the Mayan stones then created cardboard relief copies that he could use to create numerous copies of the designs which he sold to tourists from his art studio.



Dale Nichols, *Untitled (Mayan Figure with Drum)*, paperboard, 2021.7.2

SHOP

We Always Had Chickens
Paintings and Memories

\$45

Written by Susan Masek and Marilyn Ortner
with illustrations from Susan Ortner, Margaret Redman, Ellen Fisher, and Lorraine Ortner
Lorraine Ortner, Blake and Jim Hilde, Sue and Mattie Ortner, Mary Smith, and
Thomas Schiller, Lorraine Ortner, Richard Ortner, John Hoffman, and others
Illustrated by Lorraine Ortner-Blake

WE ALWAYS HAD CHICKENS CATALOG

Contact the museum for how to order online

WE LOOK FORWARD TO SEEING YOU!

FOLLOW US  