

Beginning December 16, 2024, until our Grand Opening 2025, the museum will be temporarily closed.

**BONE CREEK**  
MUSEUM OF AGRARIAN ART  
575 E Street | David City, NE 68632  
ADDRESS SERVICE REQUESTED

Non-Profit ORG  
Postage  
PAID  
David City  
Permit No. 3

EIN 20-8479913

bonecreek.org

# XVIII BEFORE WE MOVE...

## VOLUME, ISSUE III LET'S TAKE A TRIP DOWN MEMORY LANE

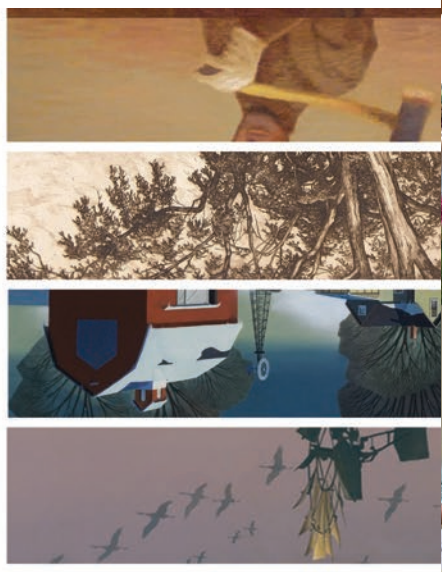
Since 2008, the museum at 575 E Street has been a gem of a space. Once all the pipes and plumbing supplies were removed from the M&M Plumbing shop, the historic architectural features and warm color palette of the rooms were unveiled in preparation to display what would become more than 50 exhibitions of exceptional Agrarian Art like nowhere else in the country. Though often our ideas and crowds pushed the boundaries of our square footage, the experiences that our visitors have had with creative expression live on to empower all those who love the land.

*Here are just a few of the countless memories made over the last 16 years.*



Thank you to the nearly 100 men and women who volunteered as board members and docents at Bone Creek Museum! Your time and efforts have touched the hearts of many over the last 16 years.

- |                             |              |                |               |                |              |
|-----------------------------|--------------|----------------|---------------|----------------|--------------|
| <b>FORMER BOARD MEMBERS</b> | Greg Aschoff | Samantha Kosch | Carol Moseman | Paul Perske    | Tim Wollmer  |
|                             | Ryan Cameron | Kathleen Lohr  | Mark Moseman  | Carey Potter   | Alice Wood   |
|                             | Dee Hanson   | Laura Moravec  | Tom Neary     | Barb O'Connell | Brian Zimmer |
|                             |              | Mike Moravec   | Ruth Nichols  | Vickie Riddle  |              |



**BONE CREEK**  
MUSEUM OF AGRARIAN ART

Agrarian Art  
NEWSLETTER

XVIII  
2024  
VOLUME, ISSUE III  
NOV

NOVEMBER 2024

# CALENDAR -of- EVENTS

08  
DEC

**Christmas on the Bricks**  
Dec. 8, 2024  
12:00-4:30 pm

15  
DEC

**Pollinators:  
Nebraska Impact Artists**  
Thru Dec 15, 2024

BOARD OF DIRECTORS  
STAFF

Ron Clarke  
Allen Covault  
Anna Nolan (Covault)  
Jim Hanna  
Johnathan Hladik  
Louise Niemann  
Connie Perry  
Cherie Schrader  
Ruth Thoendel  
Amy Tomasevicz

Gabrielle Comte  
Amanda Guenther  
Sarah Juranek

## — CURRENT — MUSEUM HOURS

Wednesday-Saturday:  
10AM-4PM

Thursday:  
10AM-6PM

Sunday:  
1PM-4PM

Monday, Tuesday, Major Holidays:  
Closed

Appointments and tours available

FREE admission

402.367.4488  
www.bonecreek.org

**BONE CREEK**  
MUSEUM OF AGRARIAN ART

575 E St, David City, NE 68632

# NEWS & EVENTS

## SAVE THE DATE

### GRAND OPENING WEEKEND

April 5-6, 2025

Invitations to follow.

## MPMA AWARD

Anna Nolan and Allen Covault accepted a publication and design award from the Mountain-Plains Museums Association again this year. The museum is so fortunate to work with the highly talented designer Ashley Cameron.



## MEMBERSHIP

If you are reading this newsletter, you likely just received the brochure for our annual membership appeal. Your annual support makes all the difference to keep our museum open and free to all. As you know, tremendous changes are in the works at the museum. You won't want to miss our many special events planned for the new larger space. Members at the Sower \$50 level receive a discount in our gift shop. Harvester members at \$100 receive free or discounted admission to hundreds of museums across the country through NARM. At the Pioneer \$1,000 level, members receive two free tickets to events. Other ways to support Bone Creek is by becoming a volunteer, leaving a legacy gift, and being a corporate sponsor. We appreciate all levels of support. Thank You!

\$25		GARDENER
\$50		SOWER
\$100		HARVESTER
\$250		SODBUSTER
\$500		HOMESTEADER
\$1,000		PIONEER
\$5,000		SUSTAINING BENEFACTOR
\$10,000+		GRAND BENEFACTOR

EIN 20-8479913

# NEWS

FROM THE FIELD

## Pollinators

AUGUST 23 – DECEMBER 15, 2024

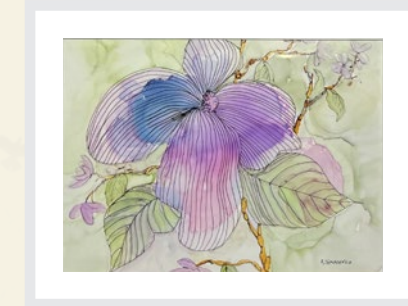
Through December 15, you can still see the exhibition, "Pollinators" by Impact Nebraska Artists, a professional exhibiting artist group since 1985. This collection explores the roles of the little helpers that make our gardens grow.



Impact Nebraska reception Aug. 2024

Pollinators are the secret heroes of our gardens, orchards, fields, and farms. Birds, bats, butterflies, moths, beetles, flies, wasps, small mammals, and most importantly, bees are the key to keeping our plant world diverse and healthy. Pollinator populations across the United States are declining, so it is urgent that we control insecticides and protect pollinator habitat in order to preserve our lands, our wildlife, and the crops that feed the planet. What would our world look like without pollinators? This colorful exhibit is sure to delight.

Looking ahead to our spring gardens, guest Kelly Feehan from UNL Extension will help in your planning with a program in early March 2025 held at the Hruska Memorial Library in David City entitled, "Planting a Pollinator Friendly Garden." More details to come.



## CHRISTMAS ON THE BRICKS HOLIDAY RAFFLE

Enter for a chance to win works of art created by Bone Creek Museum employees, Amanda Guenther, Gabrielle Comte, Sarah Juranek, and board member Amy Tomasevicz. Tickets go on sale November 13, 2024, at Bone Creek Museum and will also be sold during Christmas on the Bricks. Winning tickets will be drawn on Sunday, December 8th at 4:30 pm at the conclusion of Christmas on the Bricks. You do not need to be present to win. Proceeds from the raffle will support the display preparations of never-before-seen artworks for our grand re-opening exhibition.

## SHOP (EXPANDED)

### NEW MERCHANDISE FOR THE HOLIDAY SEASON

Are you looking for a unique gift this Christmas season? We are partnering with Trailblazers Clothing Brand which is dedicated to helping you support the local Ag industry through what you wear.

Inspired by cherished memories of her grandmother's life on the family farm and summers spent in Cambridge, Nebraska, Trailblazers creator, Nathaly Dragoo, has dedicated her life to the agriculture industry. Receiving her associate degree in production management and agribusiness in 2023, she is currently a student at UNL furthering her passion for agriculture and entrepreneurship. Trailblazers was created to honor her roots, bring awareness to the agriculture industry, and inspire future agricultural pioneers.

We have stickers, tote bags, and limited sizes of t-shirts available so you can thank your local farmers and ranchers with this beautifully designed apparel. Bone Creek is also planning to expand our partnership with Trailblazers in 2025.



WE LOOK FORWARD TO SEEING YOU!

FOLLOW US